

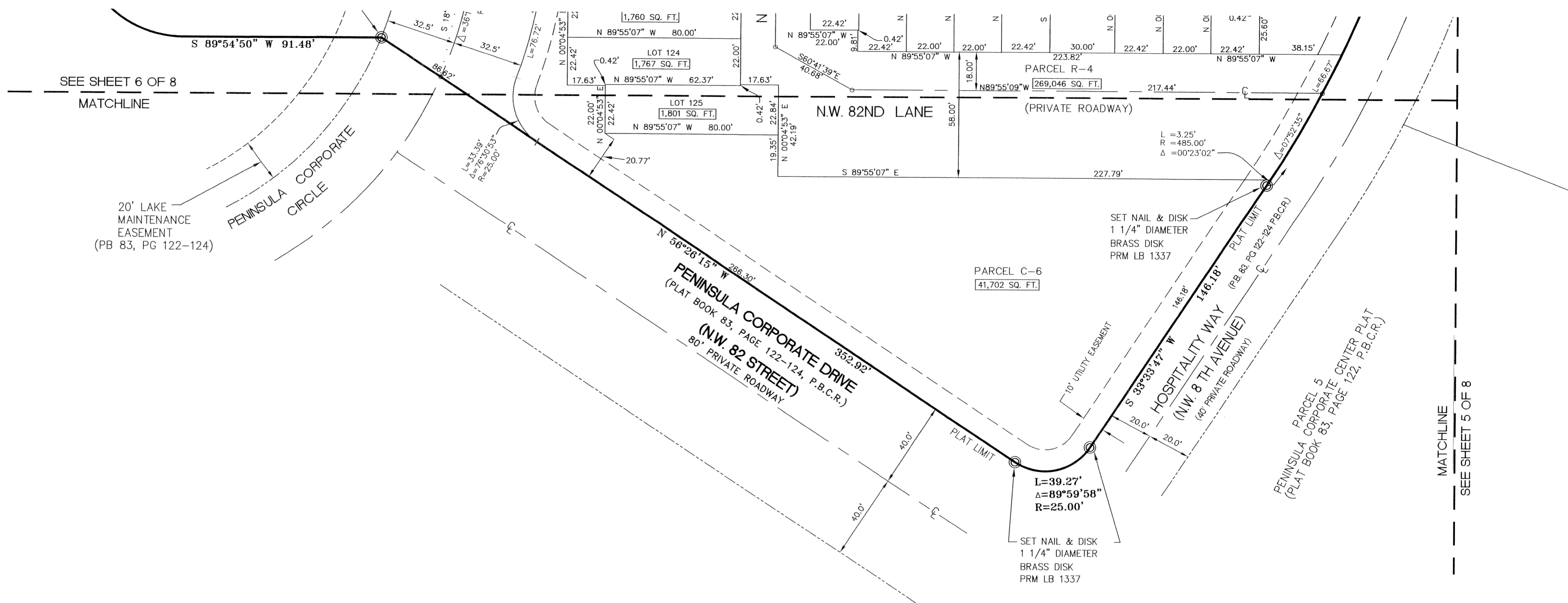
INDEX MAP
(NOT TO SCALE)

" PENINSULA VILLAGE GREENS "

A REPLAT OF A PORTION OF "PENINSULA CORPORATE CENTER PLAT" AS RECORDED
IN PLAT BOOK 83, PAGE 122-124 OF THE PUBLIC RECORDS OF PALM BEACH COUNTY, FLORIDA.
SECTION 31, TOWNSHIP 46 SOUTH, RANGE 43 EAST
CITY OF BOCA RATON, PALM BEACH COUNTY, FLORIDA

PREPARED BY:
KEITH AND SCHNARS, P.A.
ENGINEERS - PLANNERS - SURVEYORS
LB 1337
6500 NORTH ANDREWS AVENUE
FORT LAUDERDALE, FLORIDA 33309
(954) 776-1616
J:\PROJECTS\15577\REPLAT\VILLAGE-GREENS\PLAT

STATE OF FLORIDA
COUNTY OF PALM BEACH
THIS PLAT WAS FILED FOR RECORD
AT _____ M, THIS _____ TH DAY
OF _____ 20____, AND DULY
ON PAGES _____ THRU _____
DOROTHY H. WILKEN
CLERK CIRCUIT COURT
BY: _____ D.C.

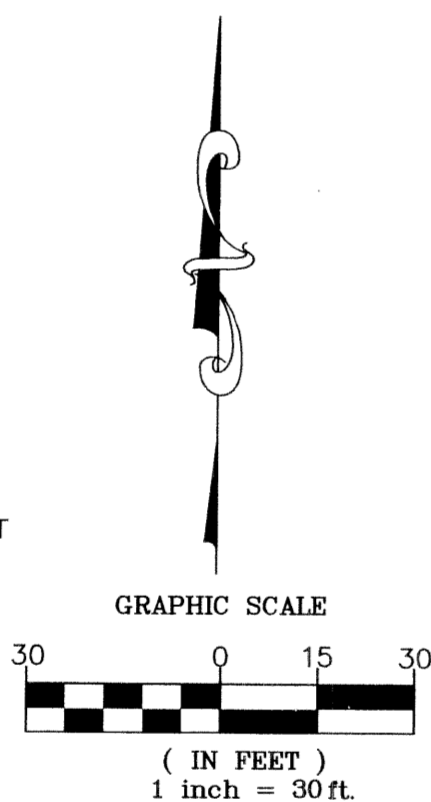


SURVEY NOTES

- INDICATES SET PERMANENT REFERENCE MONUMENT (5" ROUND CONCRETE MONUMENT WITH BRASS DISK LB 1337 UNLESS NOTED OTHERWISE).
- SURVEY DATA IN FIELD BOOK 1010.
- BEARINGS SHOWN HEREON ARE RELATIVE TO AN ASSUMED BEARING OF NORTH 89° 55' 07" WEST ALONG THE NORTH LINE OF SECTION 31-46-43.
- ALL RECORDED INSTRUMENTS OF RECORD ARE IN THE PALM BEACH COUNTY PUBLIC RECORDS UNLESS OTHERWISE NOTED.
- INDICATES PERMANENT CONTROL POINT TO BE SET IN ACCORDANCE WITH CHAPTER 177.091, FLORIDA STATUTES.

LEGEND

- CB. CHORD BEARING
- DE. DRAINAGE EASEMENT
- BM. BENCH MARK
- P.B.C.R. PALM BEACH COUNTY RECORDS
- Δ. CENTRAL ANGLE
- C. CENTERLINE
- D.E. DRAINAGE EASEMENT
- ELEV. ELEVATION
- D.B. DEED BOOK
- F.P.L. FLORIDA POWER AND LIGHT
- FND. FOUND
- L.A.E. LIMITED ACCESS EASEMENT
- O.R.B. OFFICIAL RECORD BOOK
- P.C.P. PERMANENT CONTROL POINT
- P.B. PLAT BOOK
- P.L.S. PROFESSIONAL LAND SURVEYOR
- PG. PAGE
- P.O.B. POINT OF BEGINNING
- PRM. PERMANENT REFERENCE MONUMENT
- RGE. RANGE
- P.O.C. POINT OF COMMENCEMENT
- R. RADIUS
- SEC. SECTION
- R/W. RIGHT-OF-WAY
- S.B. SOUTHERN BELL
- SO. FT. SQUARE FEET
- TWP. TOWNSHIP
- TYP. TYPICAL
- U.E. UTILITY EASEMENT
- W/. WITH
- LB. LICENSED BUSINESS
- L. ARC LENGTH



NOTICE

THIS PLAT, AS RECORDED IN ITS GRAPHIC FORM, IS THE OFFICIAL DEPICTION OF THE SUBDIVIDED LANDS DESCRIBED HEREIN AND WILL, IN NO CIRCUMSTANCES BE SUPPLANTED IN AUTHORITY BY ANY OTHER GRAPHIC OR DIGITAL FORM OF THE PLAT. THERE MAY BE ADDITIONAL RESTRICTIONS THAT ARE NOT RECORDED ON THIS PLAT THAT MAY BE FOUND IN THE PUBLIC RECORDS OF THIS COUNTY.

MATCHLINE
SEE SHEET 5 OF 8